

# Wimpole Hall





# Wimpole hall

Admittedly, Wimpole hall is now owned by the National, however for the majority of its history it has been used as a home for various English Lords and Ladies.

The National Trust chose an Ecoforest accredited installer for the difficult task of modernizing the heating systems of the Wimpole Hall building.

The large seasonal changes, combined with the large surface area and general lack of insulation make heating such a building very complicated. In the past, the solution has been simply to use large amounts of fuel to maintain the interior temperature. However, due to the increase in the price of oil and the need to be more respectful of the environment, National Trust decided that it was time for a change.

National Trust chose once again Ecoforest heat pumps for this purpose, thanks to the success seen in other similar facilities.

## Installation summary

---

Location:	Wimpole, UK
Year:	2018
Type of installation:	Ground Source
Power:	180 kW
Services:	Heating and DHW





## Background

---

Wimpole Hall is one of the largest buildings in Cambridgeshire, England, it consists of one main mansion and several annex buildings.

The main mansion was built in 1640 and was originally owned by the Chicheley family. Throughout the centuries, it was a busy place, with numerous dinners and events that were attended by Queen Victoria.

In 1976, the National Trust was given the building by Mrs. Elsie Bambridge before her death. It is currently a space open to the public where events and visits are held.

## Description of the system

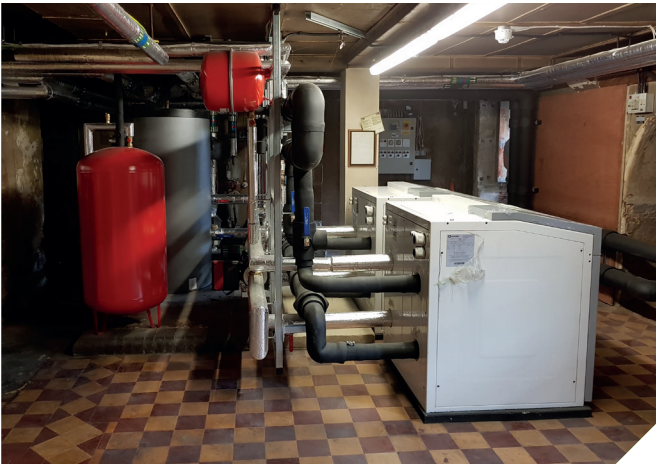
---

Actually this case is about two different installations, first of all a cascade of two ecoGEO heat pumps of 15-70kW was installed in the main mansion.

Subsequently, a new installation was made in the restaurant attached to this building. In this case an ecoGEO HP1 of 12-40 kW, accumulating a total of 180 kW in the installation of Wimpole Hall and its annexes.

The collection system used for this installation is made up of a total of 30 geothermal wells of 125 meters each, located in the parking area.

## Photos of facility





**ecoFOREST**

